



R&S Kushe Kunj



Icon Legend

On going Projects

- R&S Kushe Kunj - Managudda Mangalore (A joint venture project)
- Icon Legend - Kandivali Mumbai (A joint venture project)
- Kushe Sadan - K R Rao Road, Mangalore

Future Projects

- Kushe Courts - Kudroli, Mangalore
- Kushe Nagar - Kulai, Mangalore
- Kushe Conventions - PVS Junction, Mangalore



PVS Group

Caring for Mangalore over a Century

- PVS Beedies Private Limited
- PVS Imports and Exports Private Limited
- PVS Printers and Publishers Private Limited
- PVS Memorial Charitable Trust
- Madhusara trading Enterprises
- Sarojini Madhusudan Kushe Educational Institutions
- Sarij Madhu Kushe Properties
- PVS Infra



PVSinfra
adding imagination

Corporate Office :
PVS Mahal, Kodialbail, Mangalore 575003
Tel : +91 824 2496632 / 2443083 / 94490005044
Email : info@pvsinfra.com
www.pvsinfra.com

This brochure is purely conceptual and is not a legal offering. The promoters / architects reserve the right to add / delete / alter any detail / specification / elevation mentioned herein

a destination begins...

**KUSHE
SADAN**
Commercial Complex | Office Space



a PVS Infra project



Designed as a commercial complex, Kushe Sadan with its magnetic architectural features, is an vibrant, luminous building with international appeal. It is ideal for corporate offices, brand retailers and small business looking for a premium space in the heart of Mangalore City.

Kushe Sadan consists of 5 levels (Ground+4 floors with a total area of 62,805 Sq.ft) with a grand entrance lobby and high speed elevators. Kushe Sadan has an unbeatable spacious 3 level parking unimagined in its class. It is also equipped with a round the clock security system with CCTVs and 100% power backup.

Kushe Sadan, is a new destination with class and character, delivered to you by PVSI nfra.



Highlights:

- ◆ Spacious Entrance and Wide corridors with MARBLE/GRANITE FLOORING.*
- ◆ GENERATOR for common and inside lighting with sound proof enclosure.
- ◆ Spacious Parking 3 level Basement
- ◆ 60 feet wide road in front with both side parking
- ◆ 24 hours security
- ◆ TOILETS in each floor.
- ◆ CONCRETE INTERLOCK PAVING for car parking.
- ◆ vetrified FLOOR TILES.
- ◆ ACRYLIC DISTEMPER painting for ceiling & internal walls.
- ◆ MODULAR ELECTRICAL SWITCHES.

Specifications:

- ◆ Fully framed R.C.C. structure laterite walls for exteriors and concrete blocks for internal walls.
- ◆ Powder coated window fixtures with MS grills
- ◆ Telephone point, Computer point
- ◆ Double coat exterior plastering.
- ◆ External painting of the building with exterior grade approved paints.
- ◆ Over head water tank and underground sump tank with required pumps.

(* any one shall be provided in the whole project at the discretion of the Promoter.)

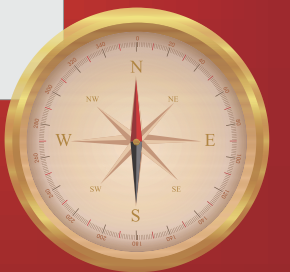
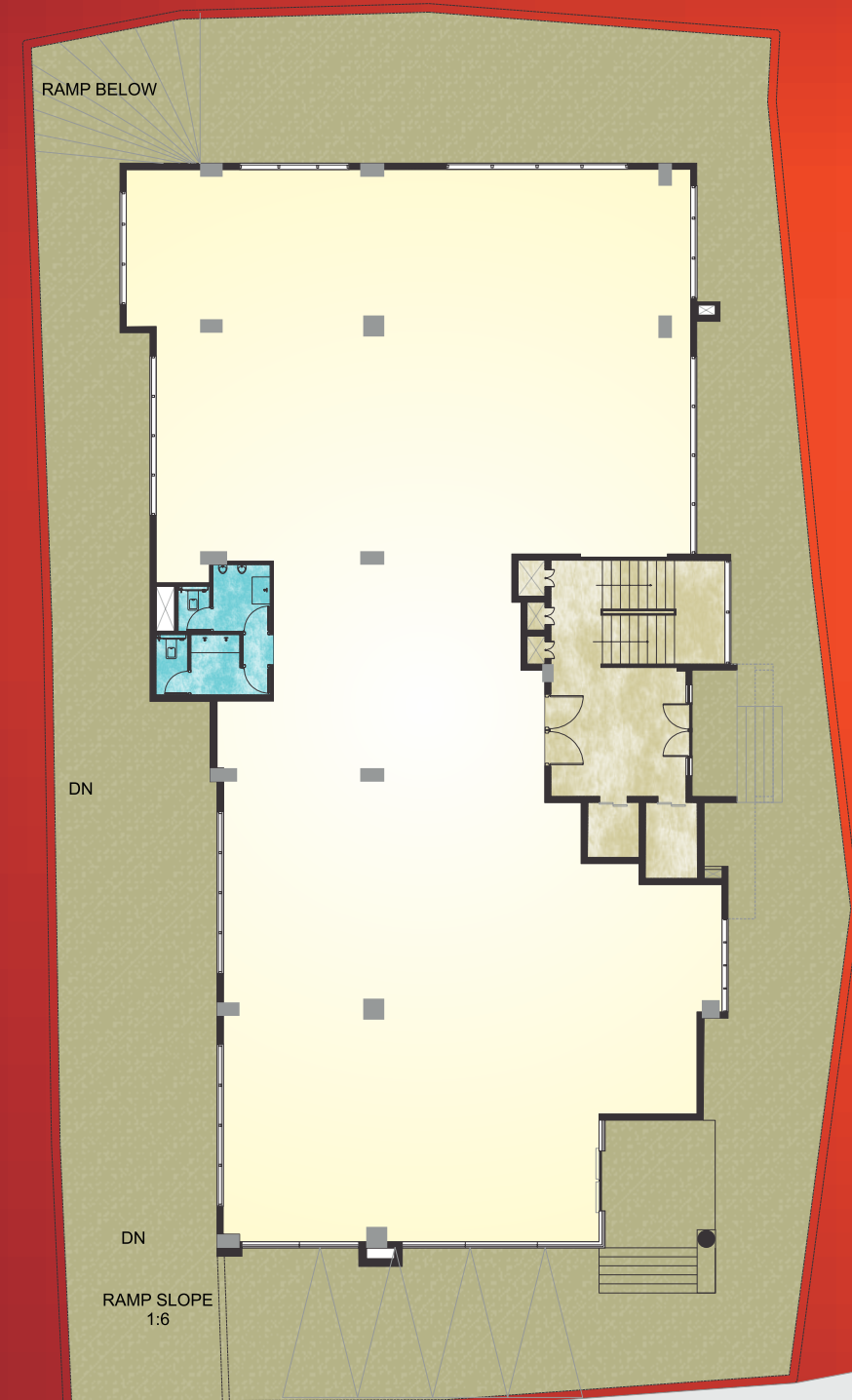




**KUSHE
SADAN**
Commercial Complex | Office Space



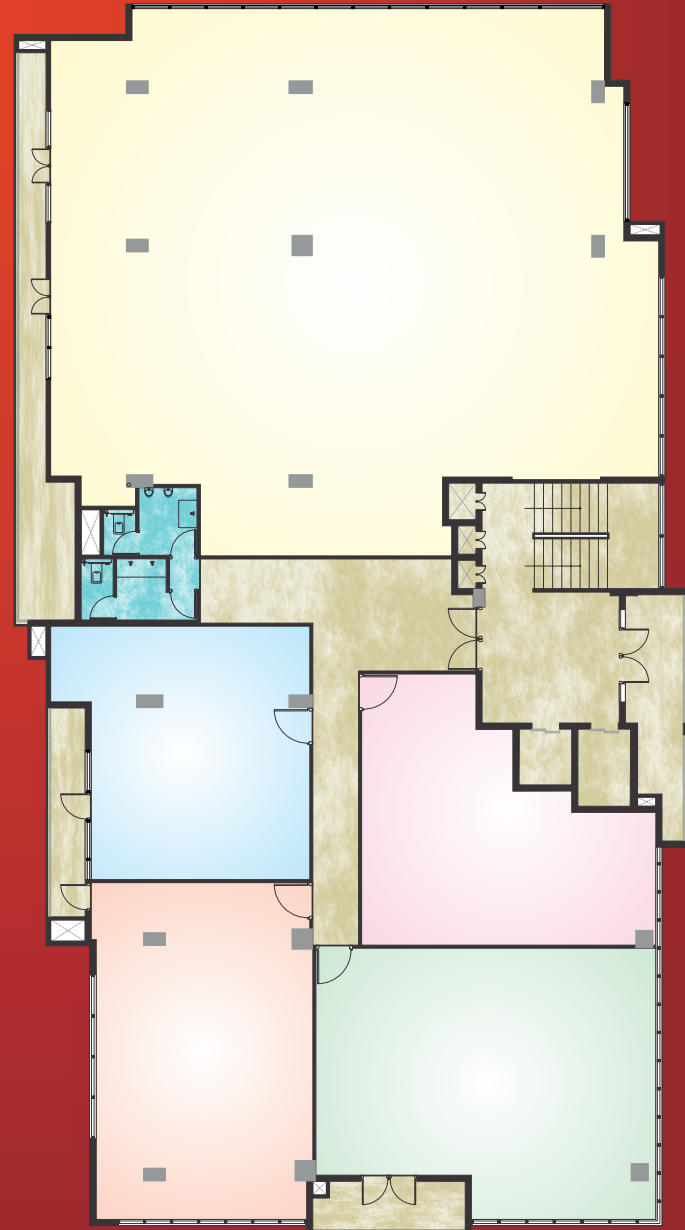
Ground Floor Plan



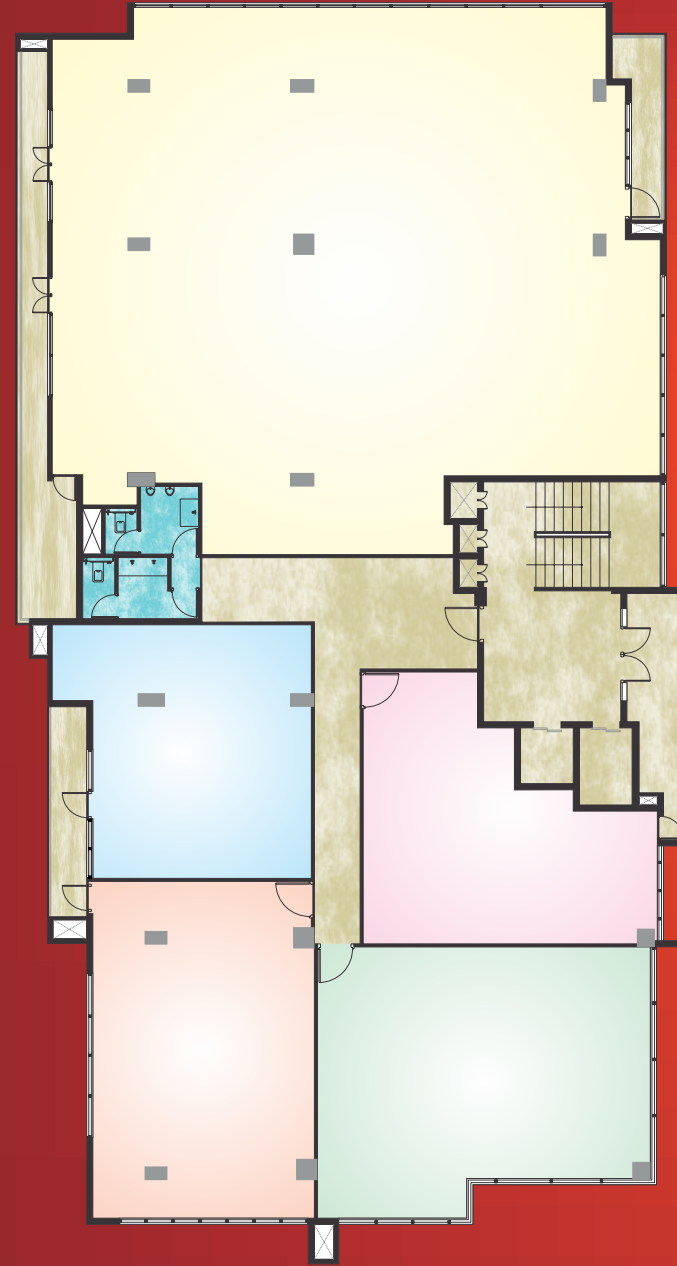
First Floor Plan



Second Floor Plan



Third Floor Plan



Fourth Floor Plan

